



CONFERENCE CENTRE

In the heart of the 1000 Islands

Midway between Toronto and Montreal
1.5 hours south of Ottawa



**409 1000 Islands Parkway,
Lansdowne, Ontario K0E 1L0
1-800-268-4536**

Table of Contents

Meeting Rooms & Capacities	1
What's Included In Your Group Booking	3
Audio Visual Equipment	4
Dining in The Islands	5
Room Assignments	6
Explore the Resort	7
...and the Area	8
Smuggler's Glen Golf Course.....	9
Resort Map.....	11

Room Configurations:

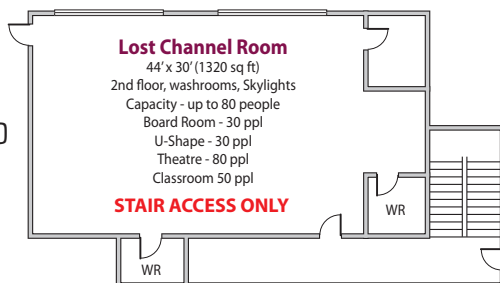
Maplewoods & Main Lodge - Upper Level	12
Maplewoods & Main Lodge - Main Level	13
Maplewoods & Main Lodge - Basement Level.....	14
Pinewoods - Upper and Lower Levels	15
Hickory Hill and Chalets	16
Birchwoods - Upper and Lower Levels	17
Oakwoods - Upper and Lower Levels	18



The Meeting Rooms

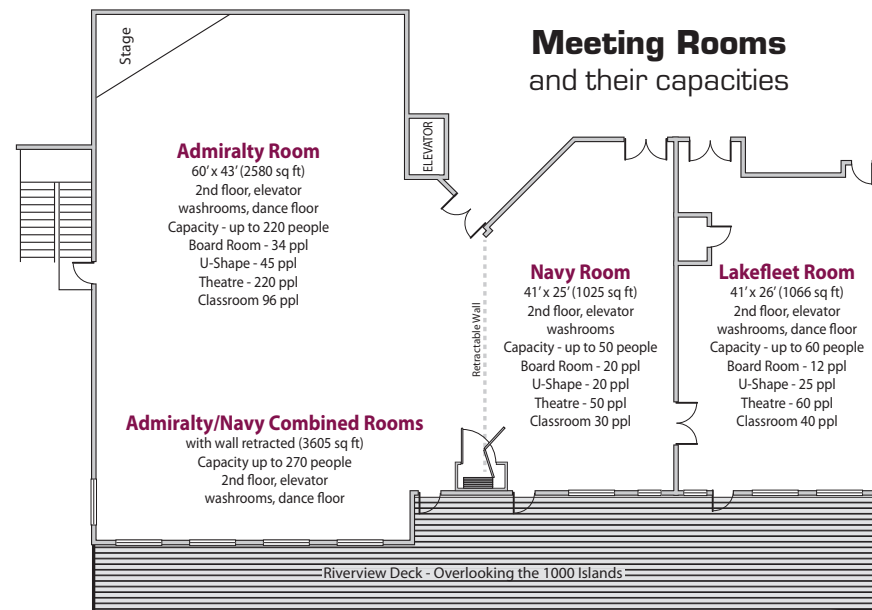


Whether you require a "Horseshoe Style" setup for a small intimate group, or a "Theater Style" for 220 people, our facilities and staff can meet your requirements.



The Glen House Resort's main lodge houses three of our meeting rooms:

1. The Admiralty Room 60'x43' (2580 sq. ft.)
2. The Navy Room 41'x25' (1025 sq. ft.)
3. The Lakefleet Room 41'x26' (1066 sq. ft.)
4. Admiralty/Navy Combined (3605 sq. ft.)
(wall between these two rooms is retractable - making a larger room)
5. The Lost Chancel Room 44'x30' (1320 sq. ft.)
(located in our Maplewoods Section - NOT handicapped accessible)



Admiralty Room - Theater



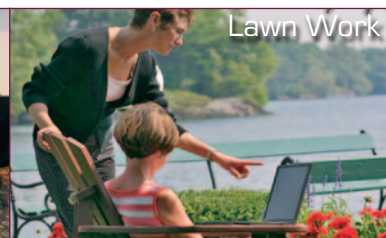
Navy - Horseshoe



Lakefleet - Boardroom



Lost Channel



Lawn Work



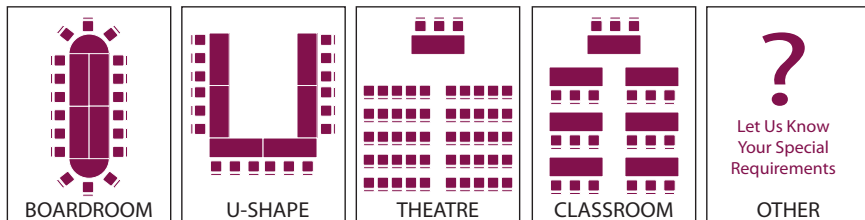
What's Included...



So what is included in your group booking?

Our packages are priced per person and include, overnight accommodation, three meals and two coffee breaks with snacks in your meeting rooms daily. Also included is one setup for your meeting room of choice.

Typical setups are pictured below, however special needs can also be addressed at time of booking. Please refer to the floor plans of the meeting rooms [previous page] for numbers of delegates which will fit in each meeting room using these setups.

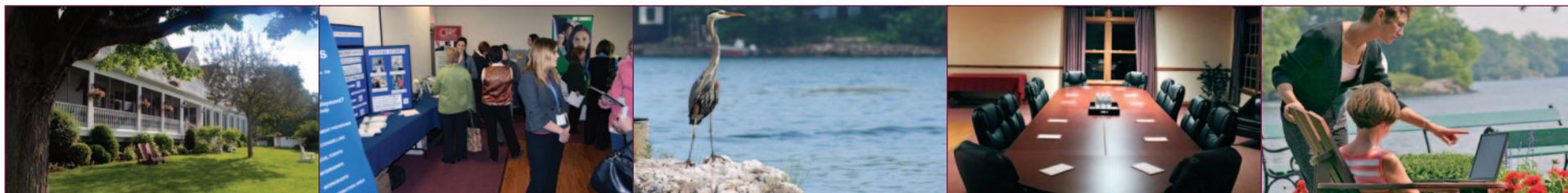


Audio visual equipment

The Glen House Resort is well equipped to handle your audio visual needs. Most participants choose to connect via our supplied HDMI cables, however Bluetooth connectivity is also available [requires drivers to be installed].

- | | |
|--|---|
| <input type="checkbox"/> Projector (connects to YOUR laptop) | <input type="checkbox"/> Large Screen TV |
| <input type="checkbox"/> Screen | <input type="checkbox"/> Podium |
| <input type="checkbox"/> Microphone/Speaker | <input type="checkbox"/> Conference Phone |
| <input type="checkbox"/> Flip Charts | <input type="checkbox"/> Side Tables |
| <input type="checkbox"/> Extension Cords | |

Please let our organizers know about any special requests. We will accommodate whenever possible.



Dining in The Islands



Meal choices for your group

Three meals a day are included in your package - starting off with a trip through our Deluxe Breakfast Buffet. Snacks and an energy break are served during your morning meeting.

Your group will then break for a lunch buffet - chosen from our Group Lunch Menus - followed by a coffee service during your afternoon meeting.

When the work is all done for the day, and after some time for your delegates to "freshen up," dinner will be served in Shipman's Dining Room. Three choices of entrees are available each night which are pre-selected from our Group Dinner Menu.

All lunch and dinner selections must be made by the organizer two weeks prior to your group's arrival (noting any allergies etc.).

Room Selection for Your Group



What you should know about room assignments

It is the organizers responsibility to supply the resort with a list of your guest's names, which we refer to as a "rooming list." (For double occupancy - roommates must be specified).

The complete rooming list must be supplied two weeks prior to your group's arrival. The rooming list should indicate any dignitaries within your group, food allergies or any "special" requirements for your guests. (eg. - lower level required, handicapped access required, etc.) All special requests will be dealt with to the best of the Resort's abilities. If by chance, there are requests which cannot be dealt with, you will be informed immediately.

The resort staff will assign specific rooms to each guest or pairs of guests - after careful consideration of any specific room requirements.





Explore The Resort...

Smuggler's LOUNGE

Your work day is done! ...but what do your delegates do until tomorrow's round of meetings? We have you covered, with the many offerings in and around the resort.

At the resort we have: Smuggler's Lounge, The Glen House Spa, Smuggler's Glen Golf Course (with driving range and practice green), indoor and outdoor pools, whirlpool, sauna, shuffleboard (front lawn), tennis court, games room, exercise room, bike rentals, and canoe and kayak rentals.



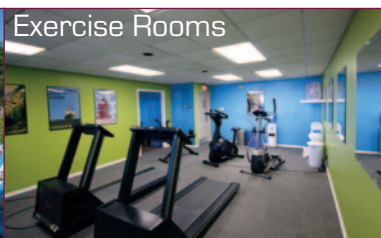
The Spa at the Glen House Resort

Within a short drive: (10 to 30 mins): Gananoque or Rockport Boatlines, 1000 Islands Helicopter Tours, Shorelines Casino Thousand Islands, Thousand Islands Playhouse, Skywood Eco Adventure, Paintball, Scuba Diving, Skydiving, Boldt Castle, Old Fort Henry, Upper Canada Village, Kingston Trolley Tours, Kingston Museums (13 in total) and the Brockville Aquatorium.

For information on any of the above, please visit our explore page on our website at: www.glenhouseressort.com/explore.



Indoor & Outdoor Pools



Exercise Rooms



Games Room



Boat Tours (10 mins)



Charity Casino (10 mins)



One of our Riverfront Deluxe Fireplace Rooms.

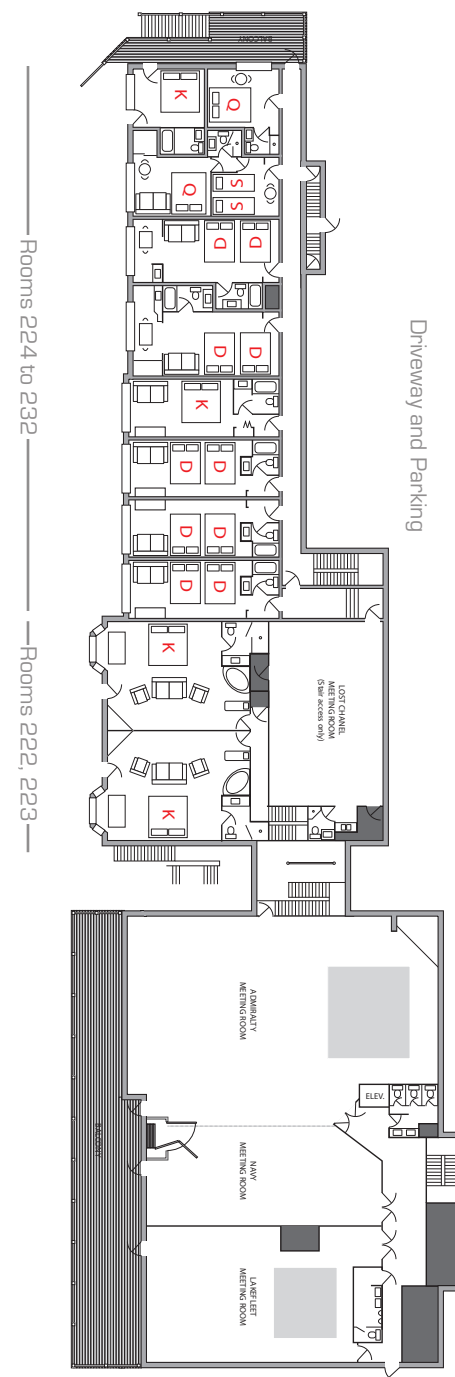


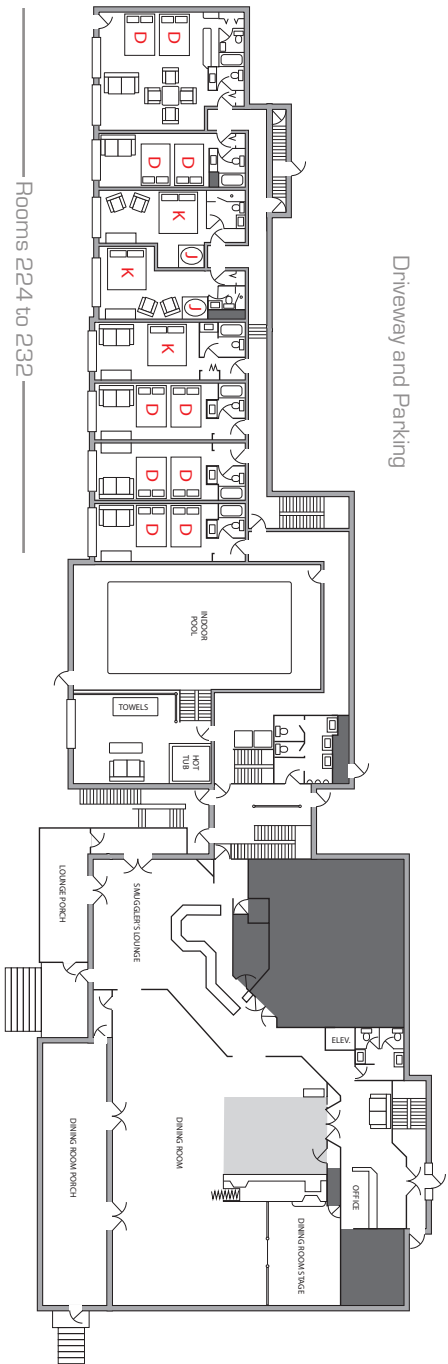
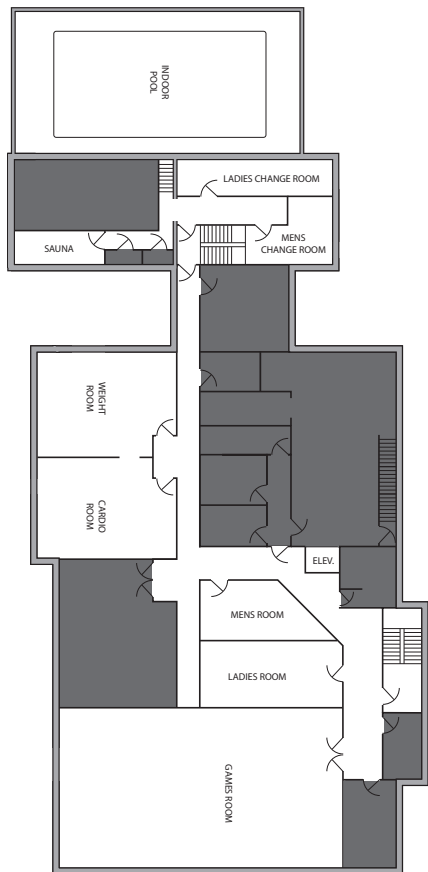
These rooms are available with two double beds or one king size bed.

Riverfront Deluxe Rooms - located closest to the St. Lawrence shoreline and typically offer the best views.

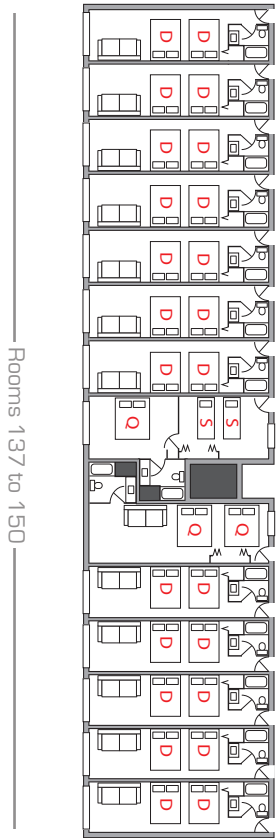


11 The Glen House Resort Conference Package

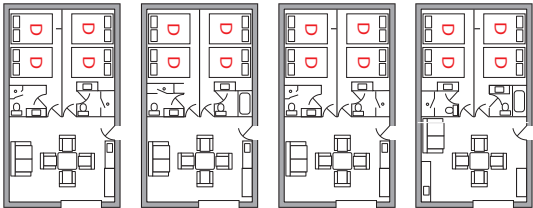




HICKORY HILL

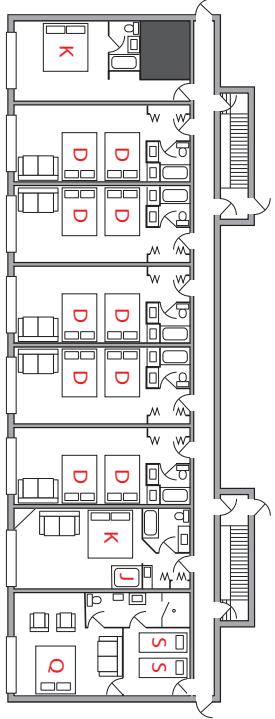


Rooms 133 to 136

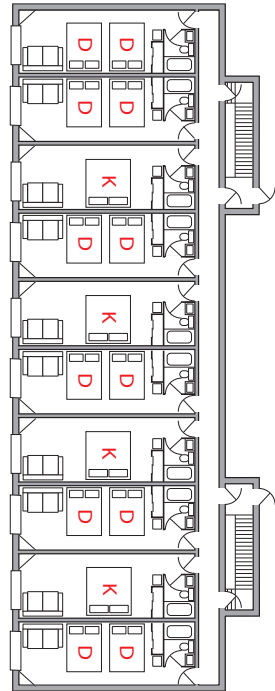


CHALETs

Lower Level Rooms 112 to 120

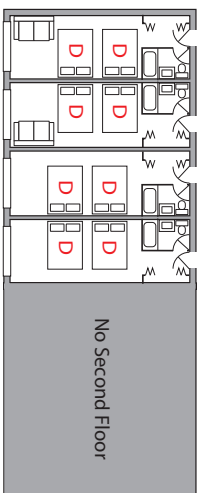


Upper Level Rooms 211 to 221

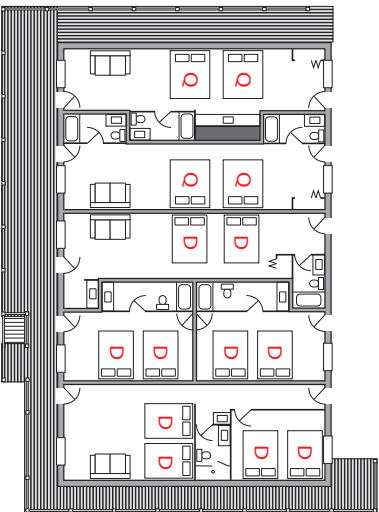




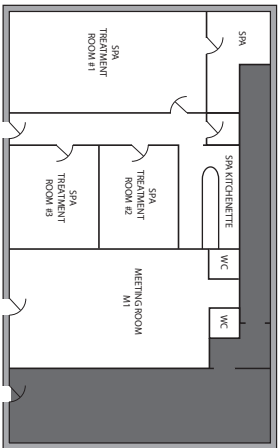
Rooms 151 to 157

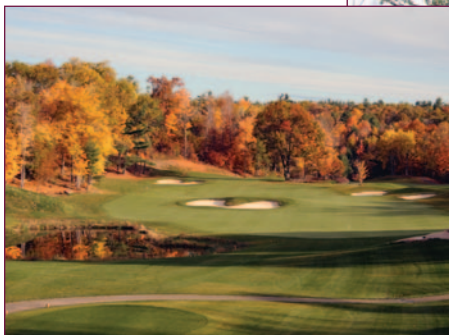


Rooms 251 to 254



Rooms 101 to 109





The Right Mix of Work... and Play!

You work hard! After your long day of meetings, you deserve some relaxation, team building and bonding with your colleagues. There is no better way to finish your time at the Glen House, than with a round at Smuggler's Glen Golf Course. Our group meeting coordinators can book your tee times, arrange a Smuggler's Glen lunch or even a barbecue steak

dinner in the clubhouse meeting rooms after your round.

The Course itself is a championship 18 hole golf course, cut into the Canadian Shield, and offers stunning vistas on a challenging layout. Our greens putt "fast and far;" our fairways are bent grass and striped, hilly with some undulating terrain; our bunkers are numerous and white; and

our tee boxes elevated with panoramic views.

We have hosted a wide range of tournaments from P.G.A. Tour Canada "Great Waterway Classic" to fun-filled high school reunions...and everything in between.

We invite you to enjoy a "day of camaraderie" at Smuggler's Glen Golf Course and leave the setup and details to us.



*Your Conference Headquarters
in the 1000 Islands*

409 1000 Islands Parkway
Lansdowne, Ontario
K0E 1L0

1.800.268.4536